

ITERATIVE DESIGN + SITUATING SPACE



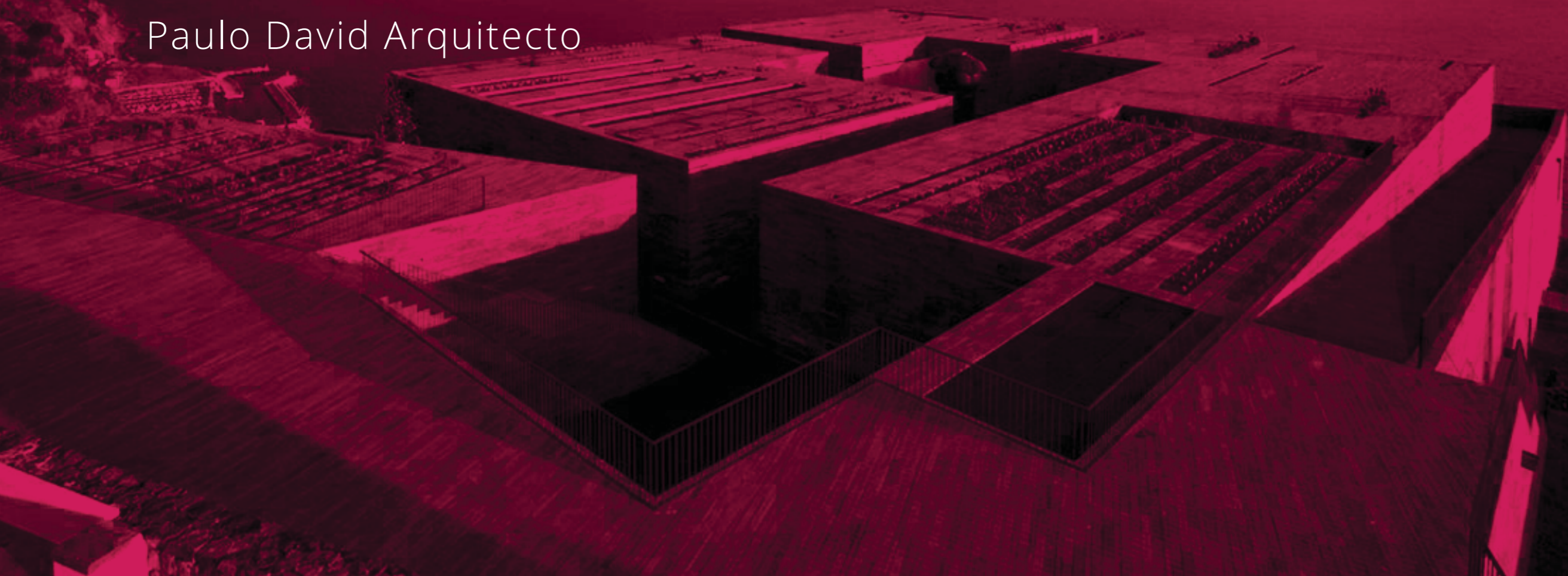
“Some questions you ask because you want the right answer. Others are valuable because no answer is right; the payoff comes from a range of attempts.”

The Atlantic 2013

SITUATING SPACE

Casa Das Mudras Art Center / Madeira, Portugal

Paulo David Arquitecto

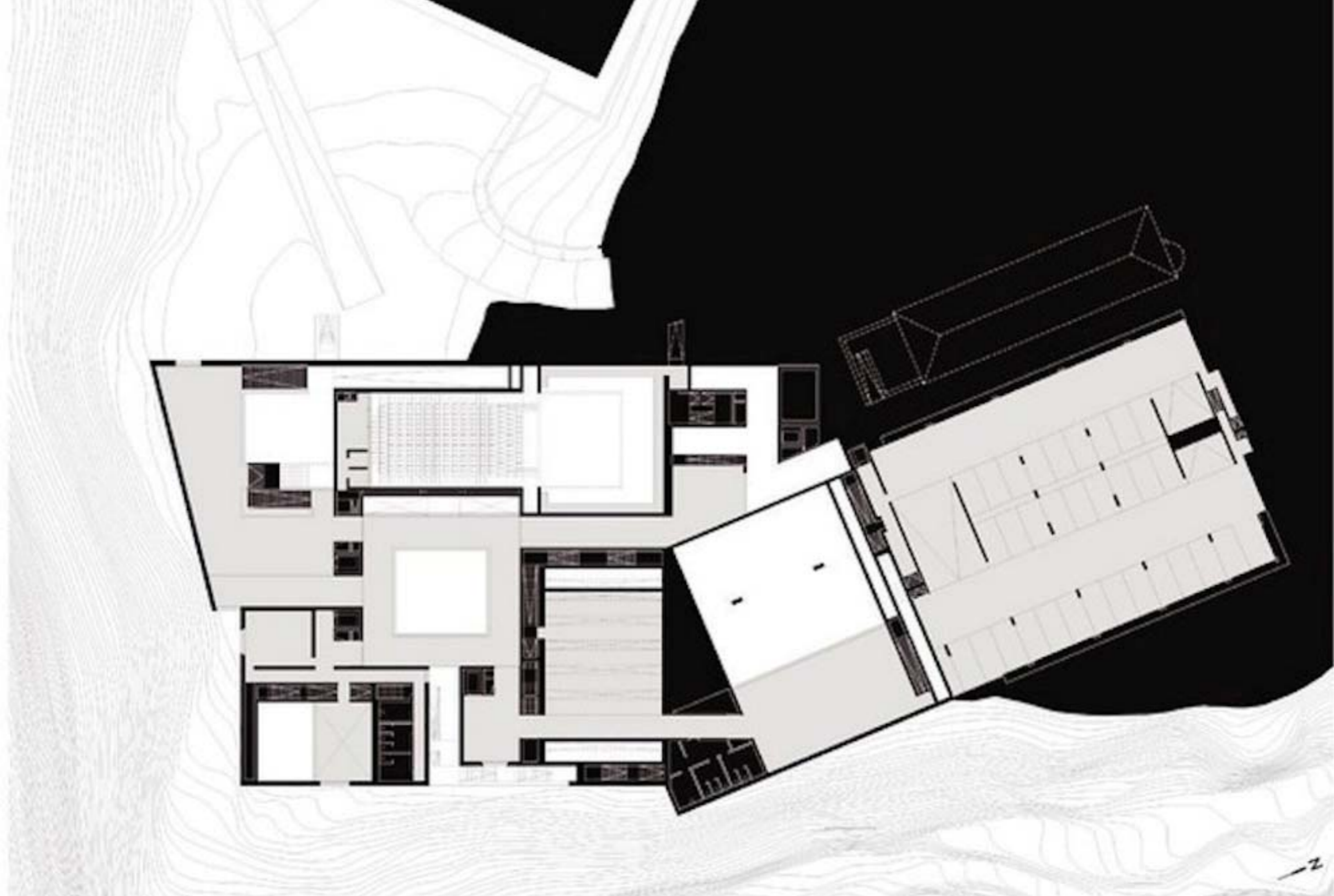




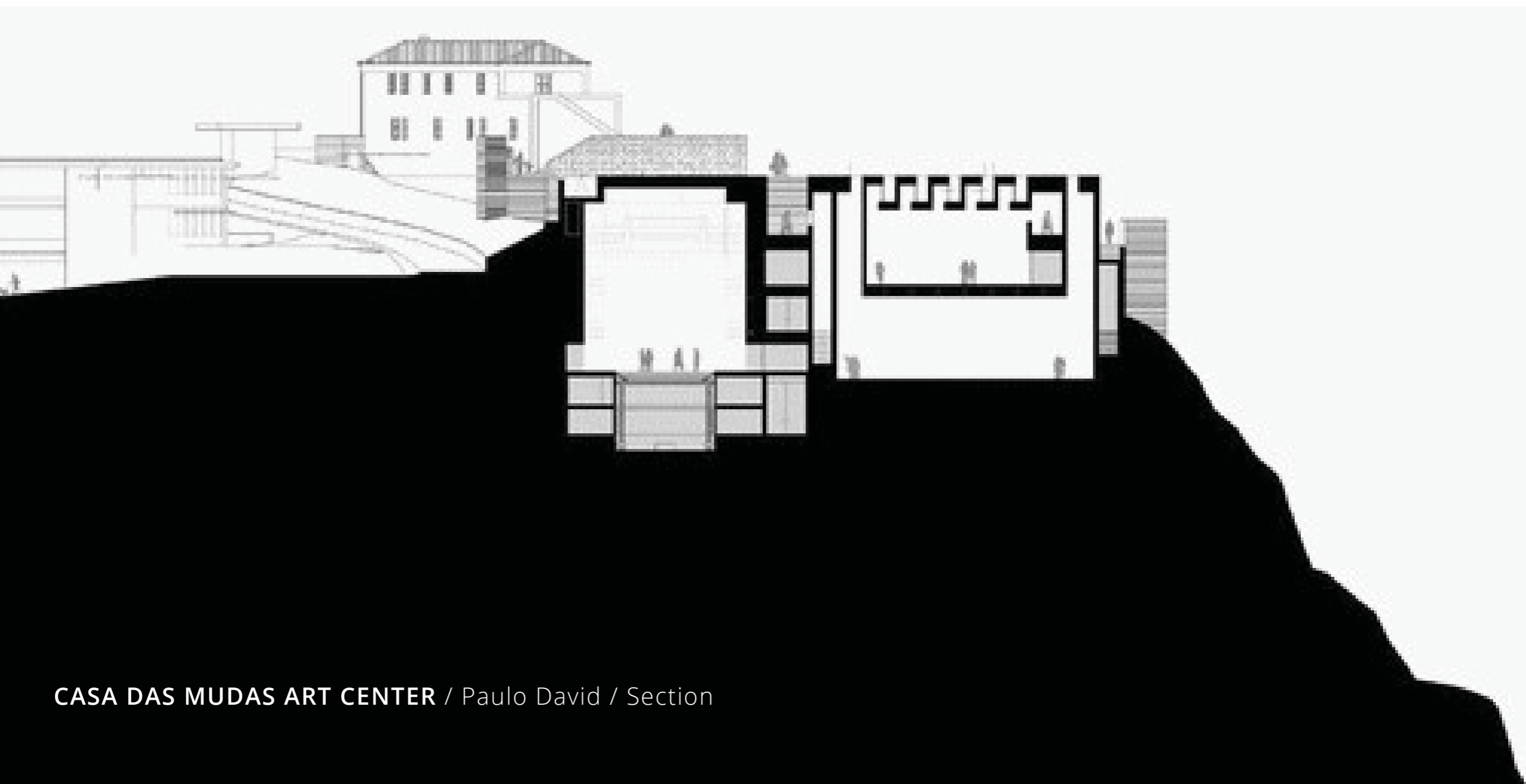
CASA DAS MUDAS ART CENTER / Paulo David



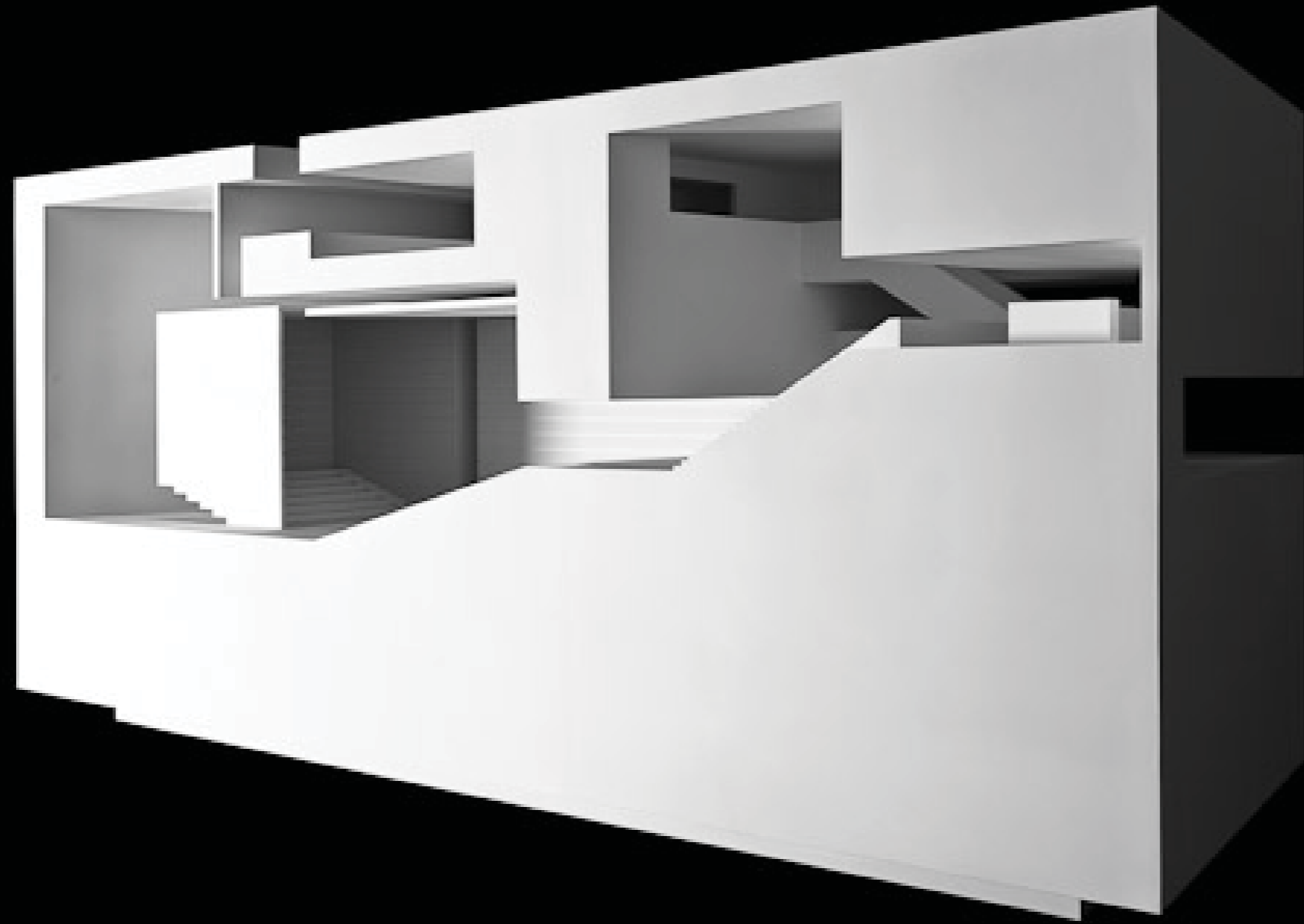
CASA DAS MUDAS ART CENTER / Paulo David



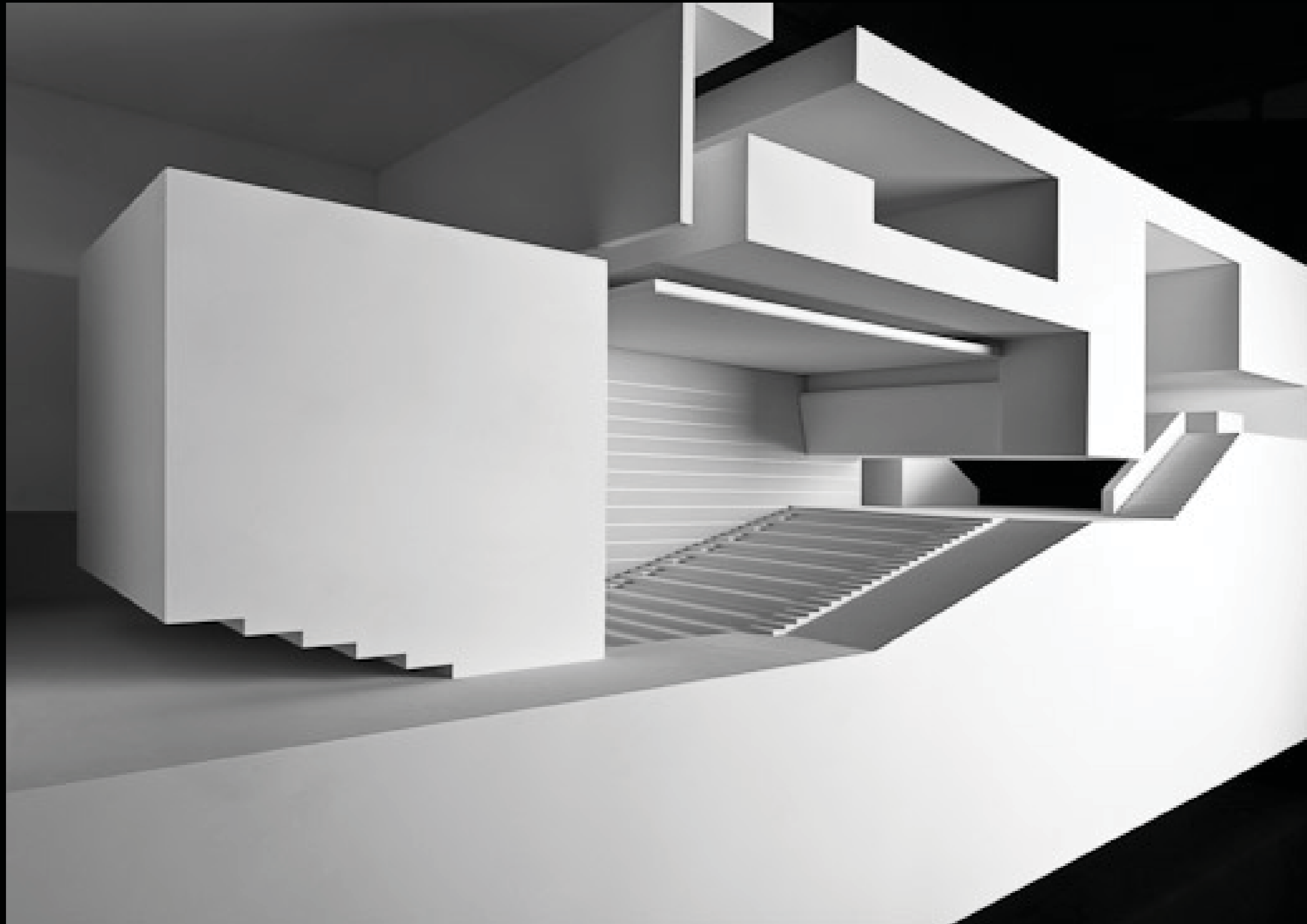
CASA DAS MUDAS ART CENTER / Paulo David / Floor Plan



CASA DAS MUDAS ART CENTER / Paulo David / Section



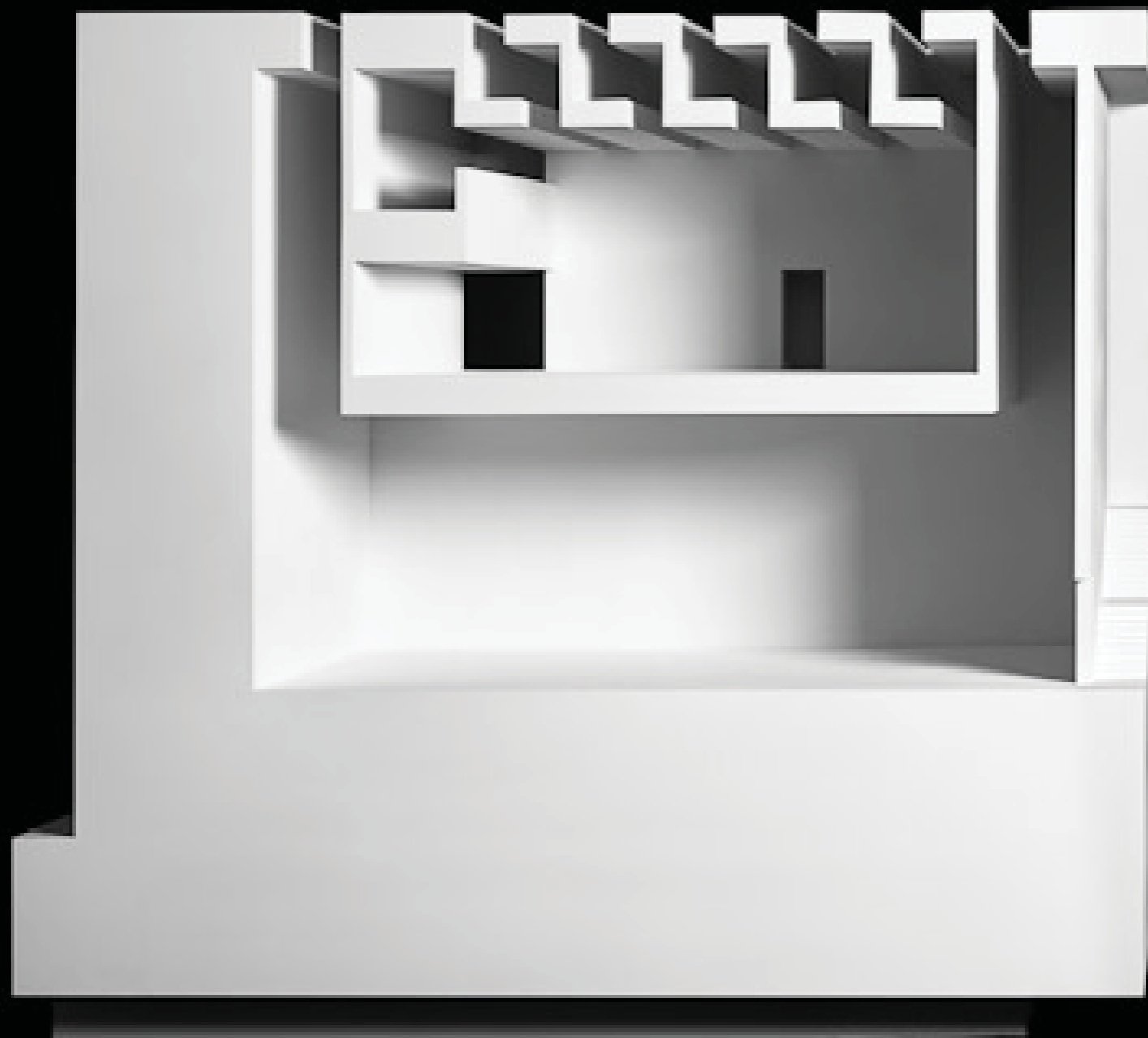
CASA DAS MUDAS ART CENTER / Paulo David / Models



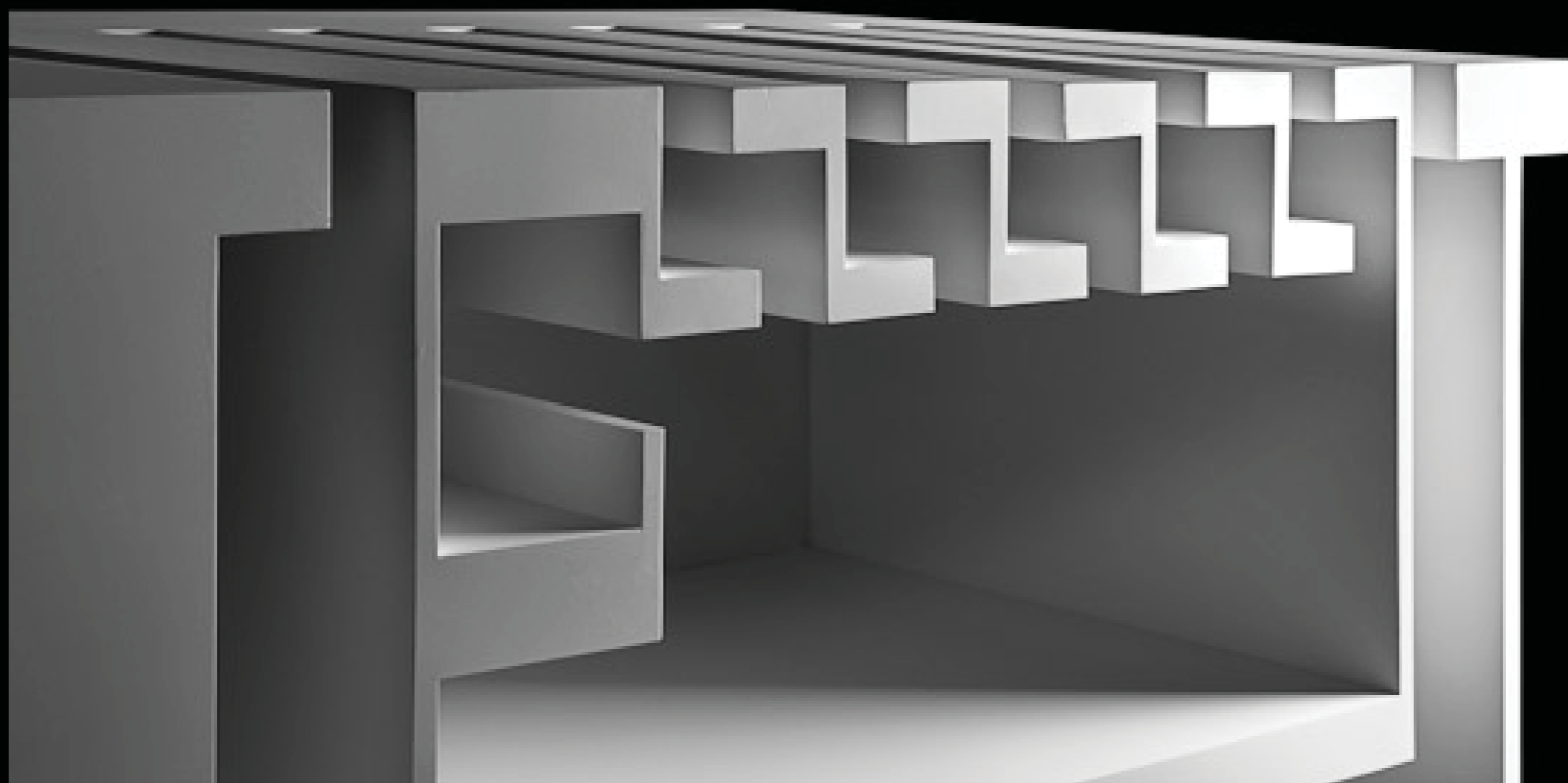
CASA DAS MUDAS ART CENTER / Paulo David / Models



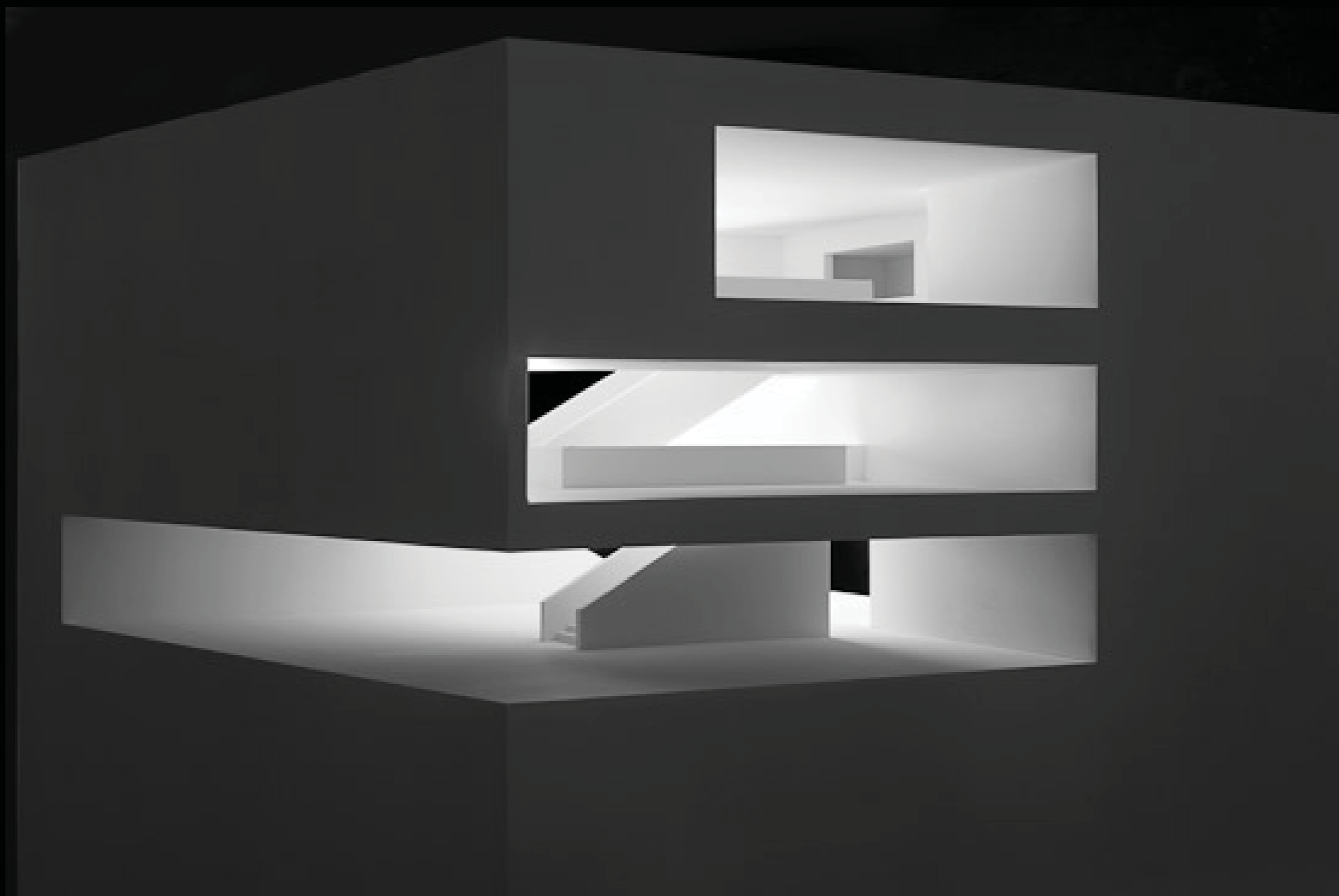
CASA DAS MUDAS ART CENTER / Paulo David / Models



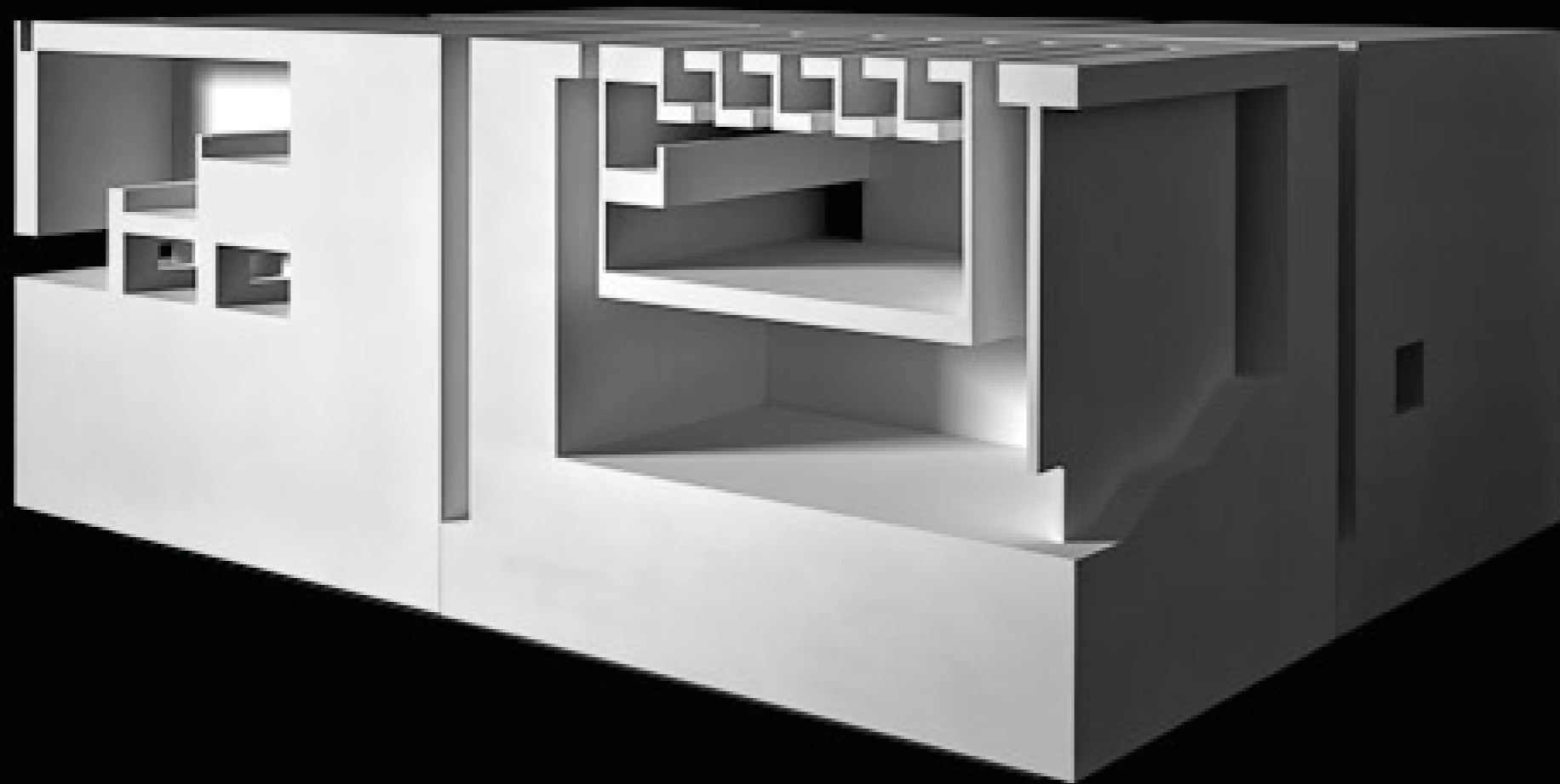
CASA DAS MUDAS ART CENTER / Paulo David / Models



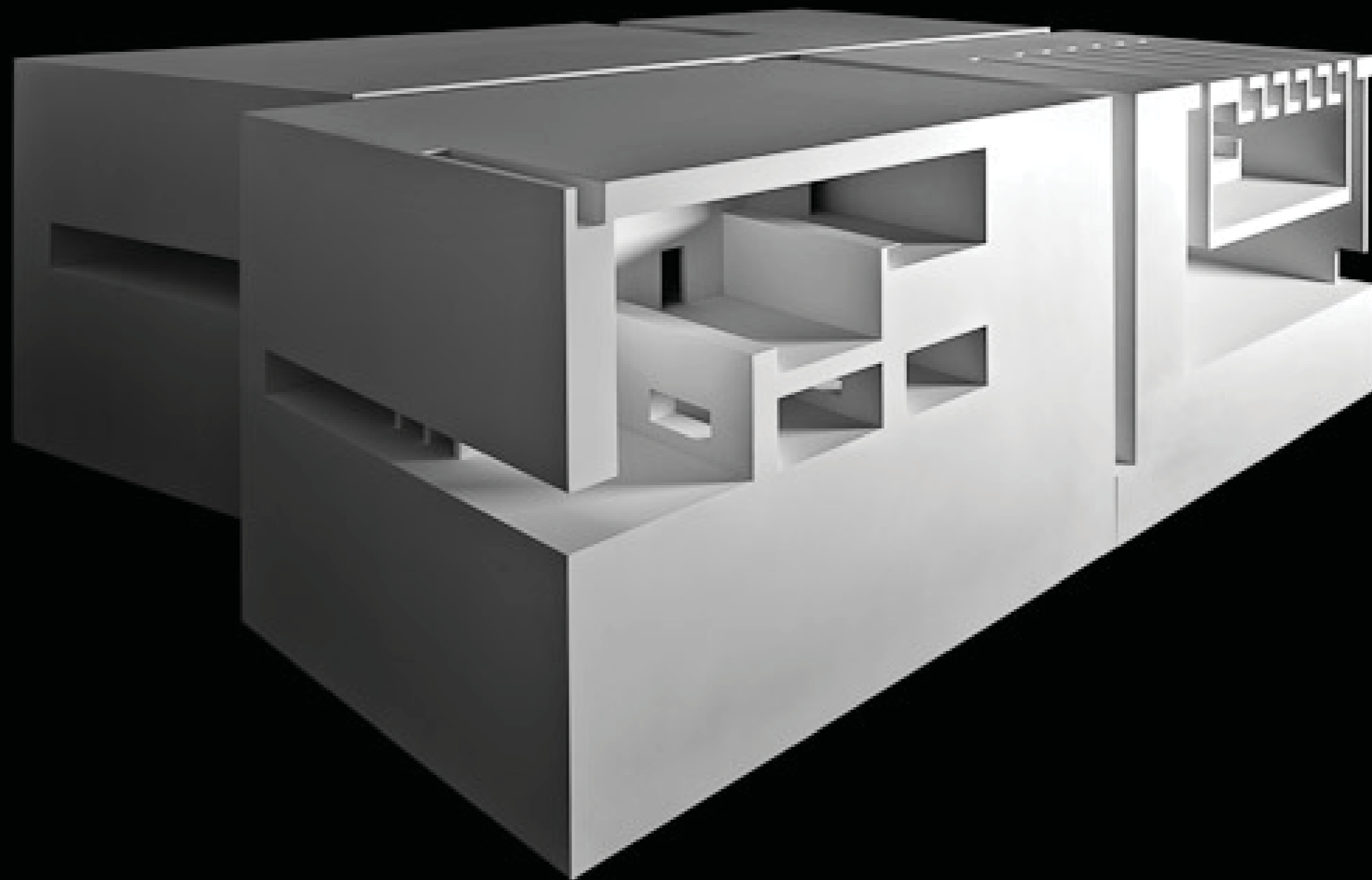
CASA DAS MUDAS ART CENTER / Paulo David / Models



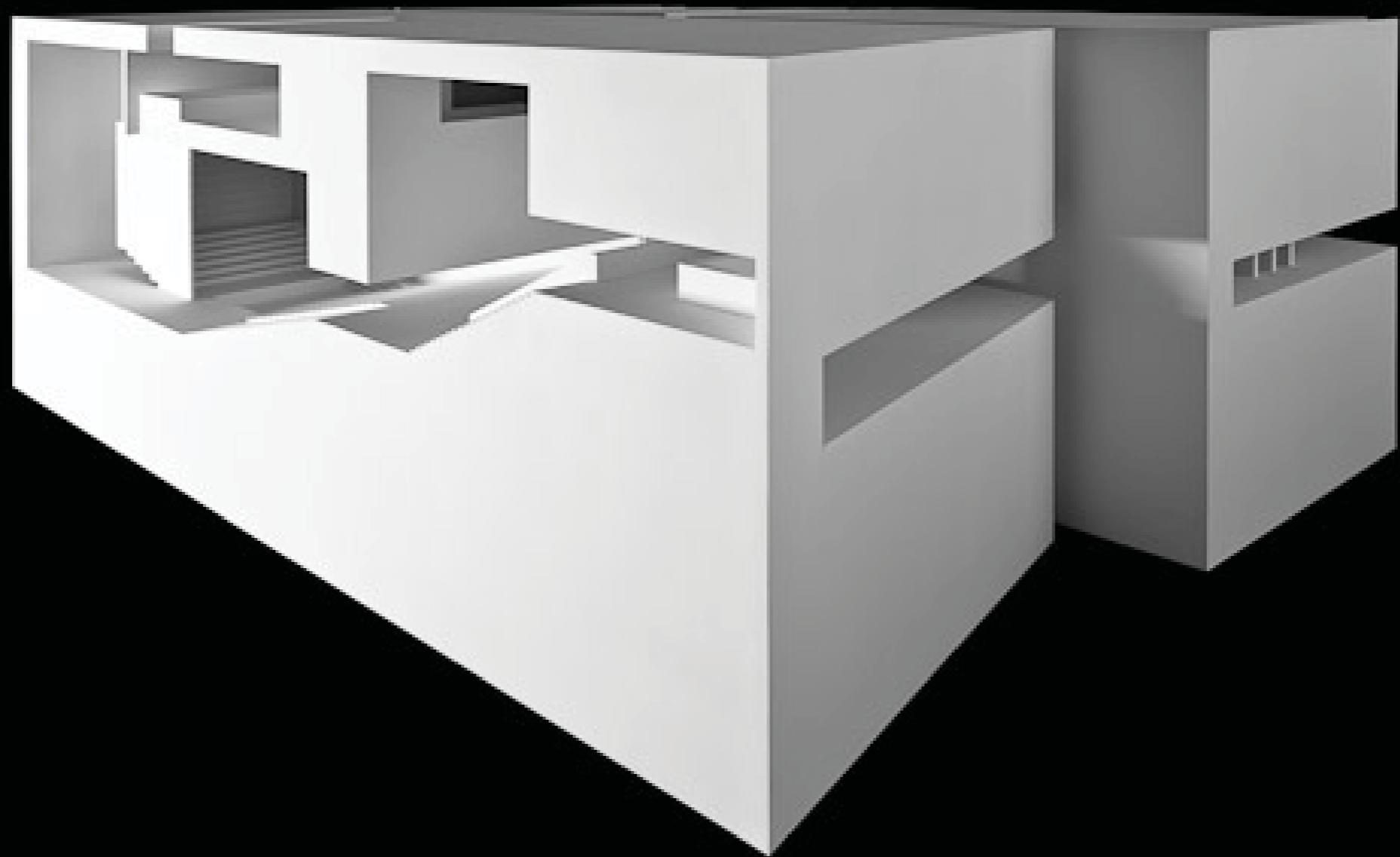
CASA DAS MUDAS ART CENTER / Paulo David / Models



CASA DAS MUDAS ART CENTER / Paulo David / Models



CASA DAS MUDAS ART CENTER / Paulo David / Models



CASA DAS MUDAS ART CENTER / Paulo David / Models



CASA DAS MUDAS ART CENTER / Paulo David



CASA DAS MUDAS ART CENTER / Paulo David



CASA DAS MUDAS ART CENTER / Paulo David



CASA DAS MUDAS ART CENTER / Paulo David



CASA DAS MUDAS ART CENTER / Paulo David

The image shows a modern architectural interior. On the right, a wide wooden staircase with a dark metal railing descends. On the left, a wooden walkway leads towards a bright opening in the distance. The walls and ceiling are made of light-colored wood. The entire scene is overlaid with a semi-transparent red filter.

SITUATING SPACE

Therme Vals / Vals, Switzerland

Peter Zumthor



THERME BATHS / Peter Zumthor



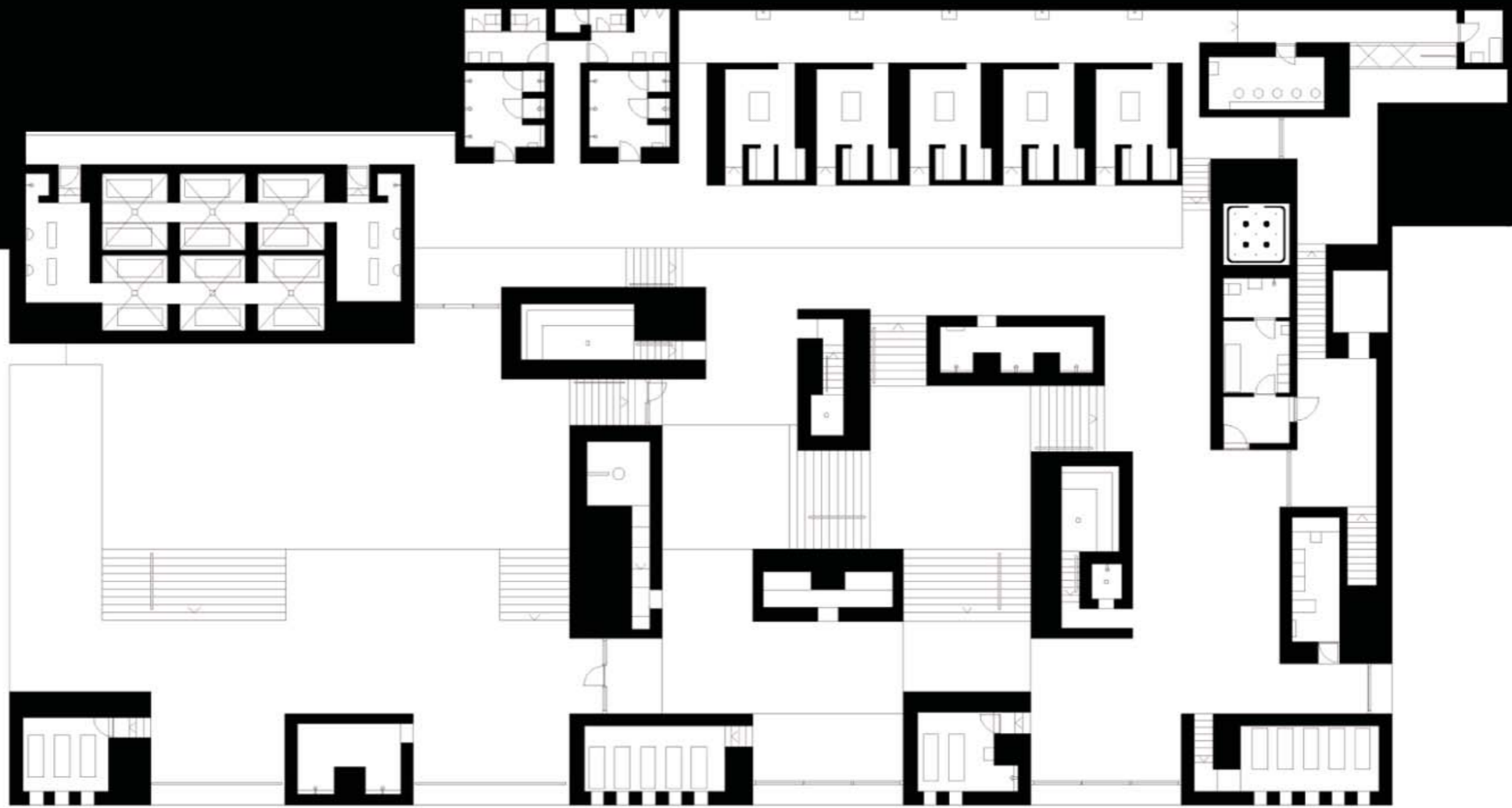
THERME BATHS / Peter Zumthor



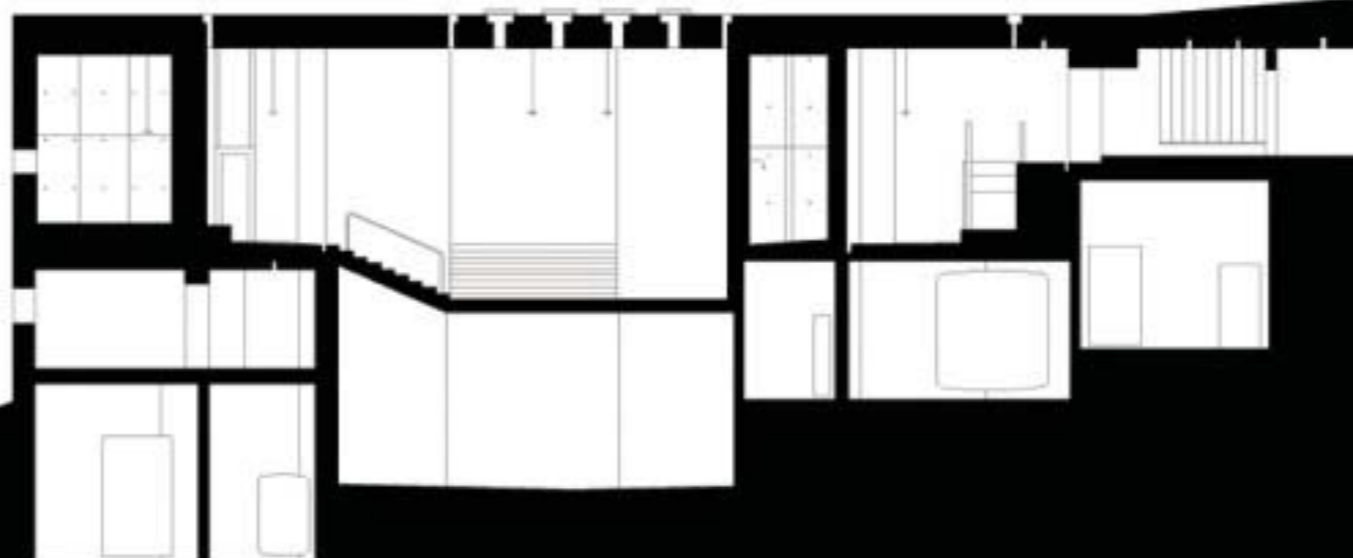
THERME BATHS / Peter Zumthor



THERME BATHS / Peter Zumthor



THERME BATHS / Peter Zumthor / Floor Plan



THERME BATHS / Peter Zumthor / Section



ThERME BATHS / Peter Zumthor



THERME BATHS / Peter Zumthor

Assignment for Tuesday November 26th.

2 (two) New Models

(Models = Cube + Site Surface)

2 (two) New Drawing Sheets

(One Plan and Two Sections Per Sheet)

Assignment for Tuesday November 26th.

2 (two) New Models

(Models = Cube + Site Surface)

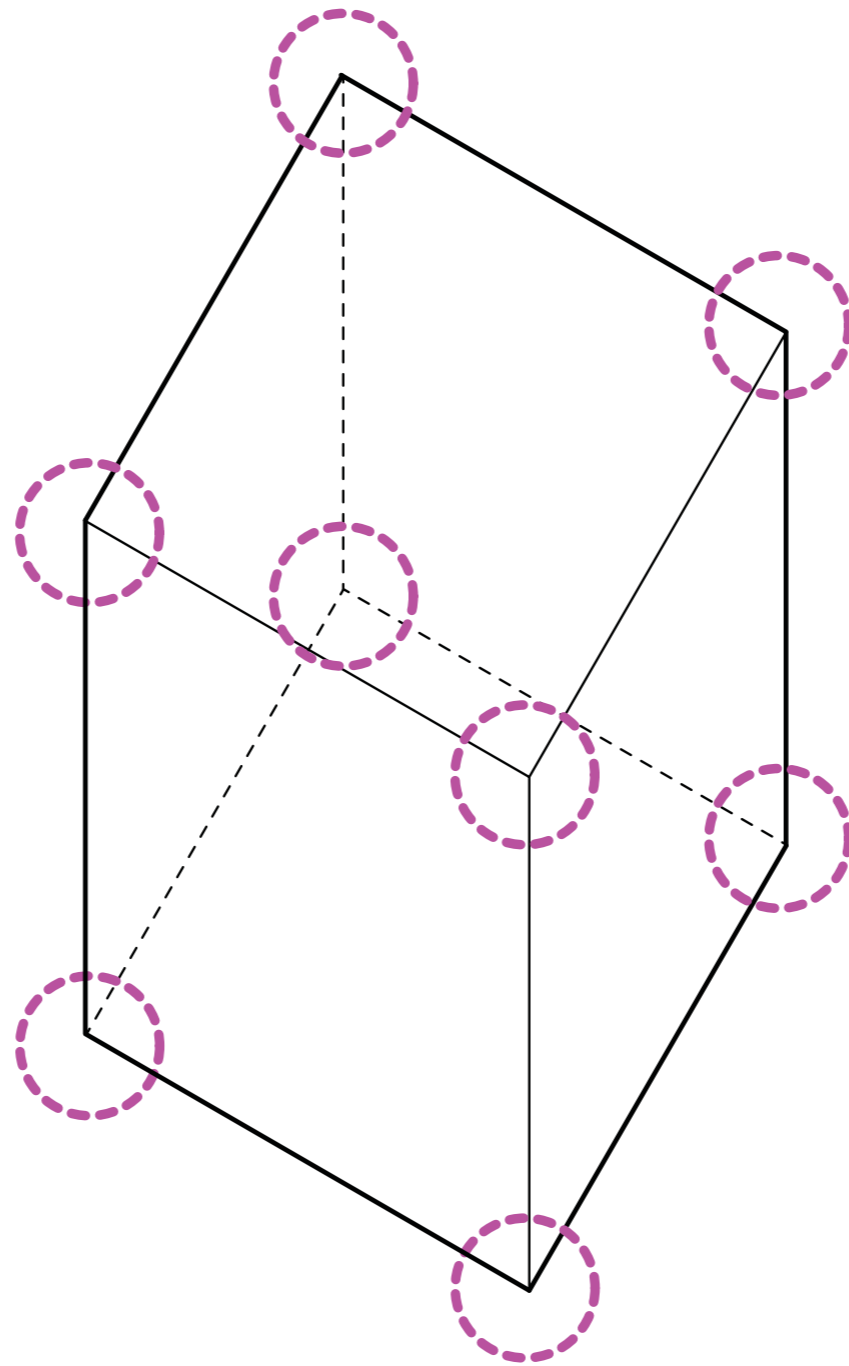
2 (two) New Drawing Sheets

(One Plan and Two Sections Per Sheet)

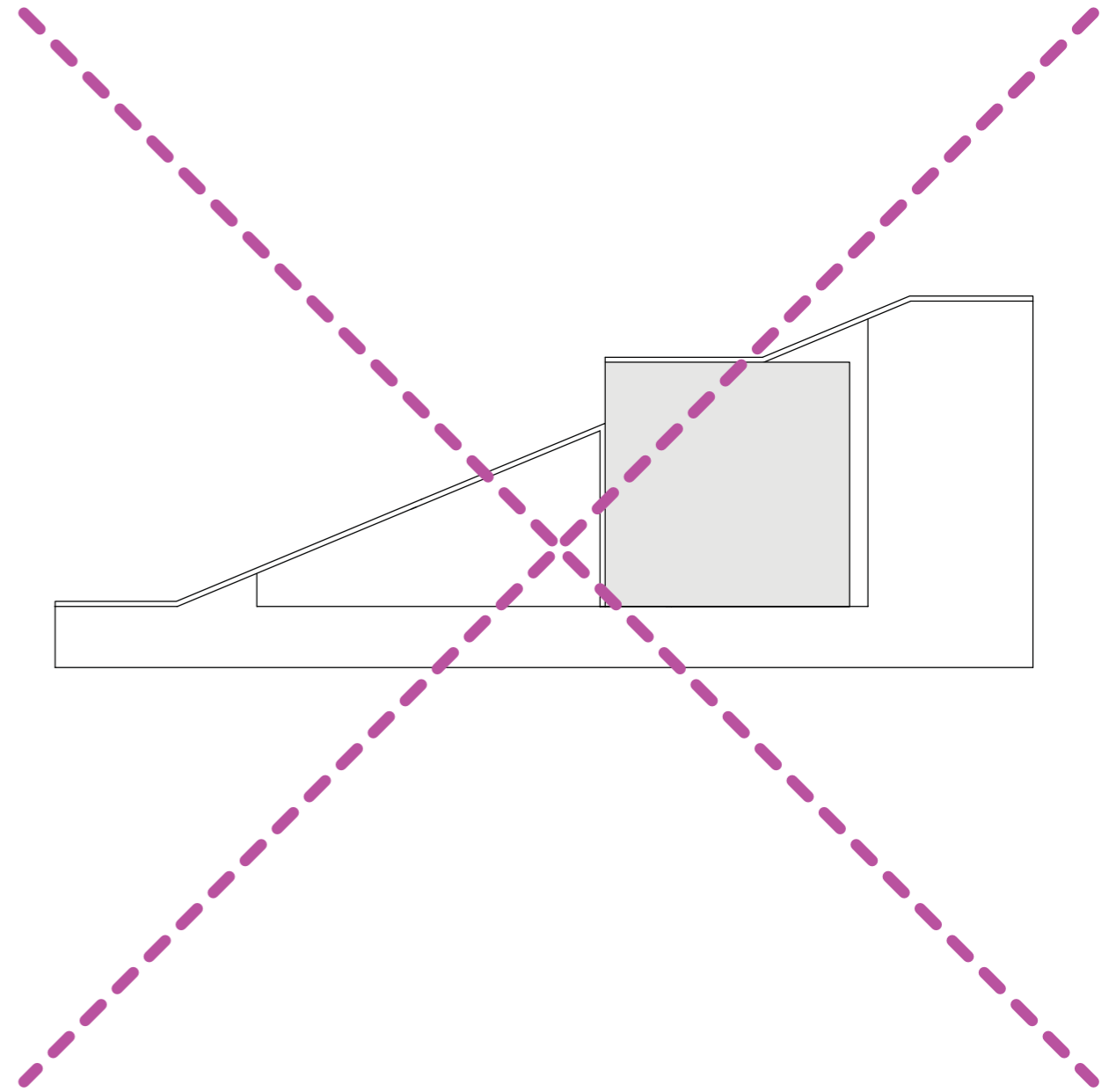
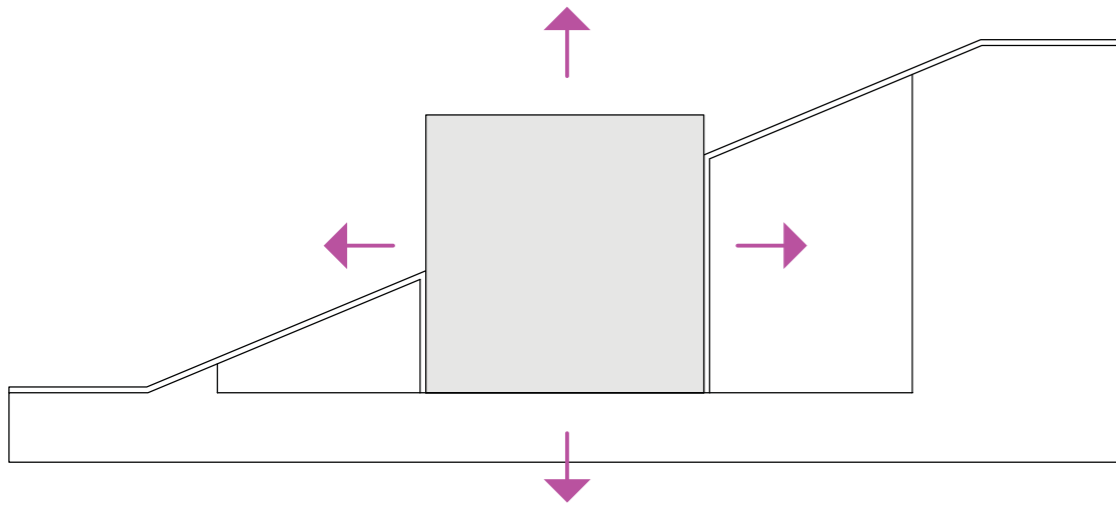
Workday

Start of Class (2pm) = 2 Models + 1 Drawing Sheet

End of Class (5pm) = 1 Drawing Sheet



1. MODELS MUST DEFINE (8) POINTS OF 3 x 3 x 3 CUBE



2. AT LEAST FOUR (4) POINTS MUST LIE ABOVE THE CHIPBOARD SITE SURFACE.

CONSTRAINTS

1. MODELS MUST DEFINE (8) POINTS OF 3 x 3 x 3 CUBE.
2. AT LEAST FOUR (4) POINTS MUST LIE ABOVE THE CHIPBOARD SITE SURFACE.
3. MODELS MUST INCLUDE ALL (3) MATERIALS, CHIPBOARD, WIRE, AND FOAM.
4. NO "RAMPS" OR "STAIRS" SHOULD BE USED IN THE MODELS. SPACES MUST IMPLY CONNECTION.
5. ALL PREVIOUS CONSTRAINTS ABOUT THE CHIPBOARD SITE SURFACE STILL APPLY.